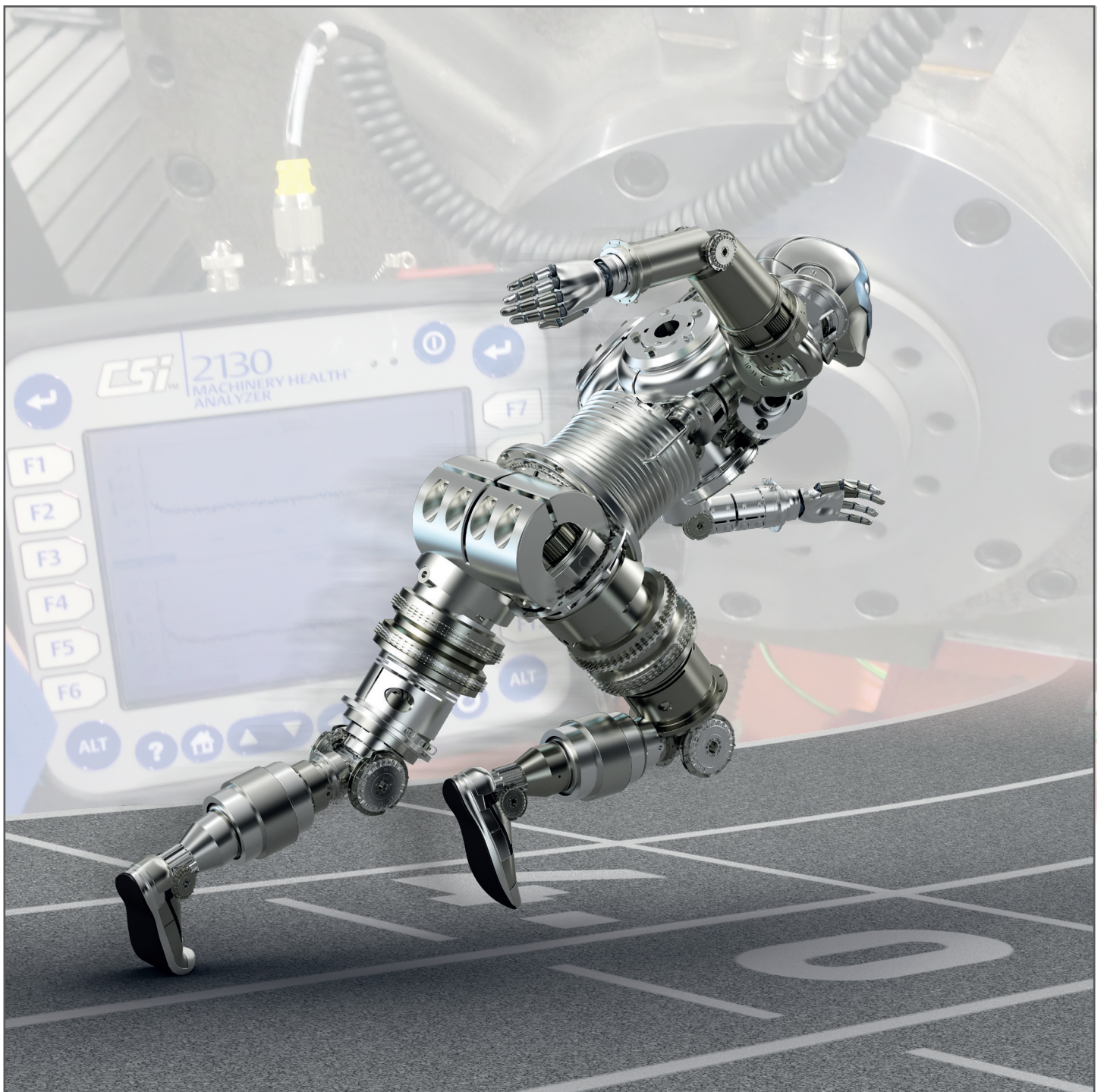


## PREDICTIVE MAINTENANCE

We will do the job for you!

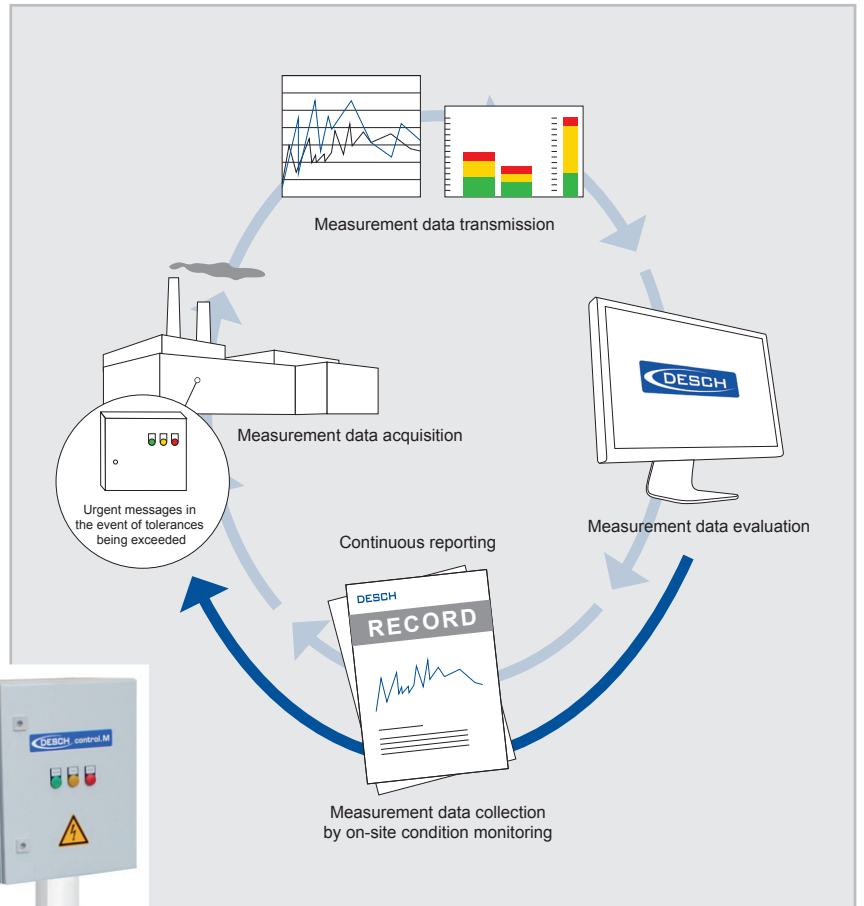


# PREDICTIVE MAINTENANCE

## DESCH Control.M

The condition-based monitoring of machinery and equipment as part of industry 4.0 became an integral part of predictive maintenance.

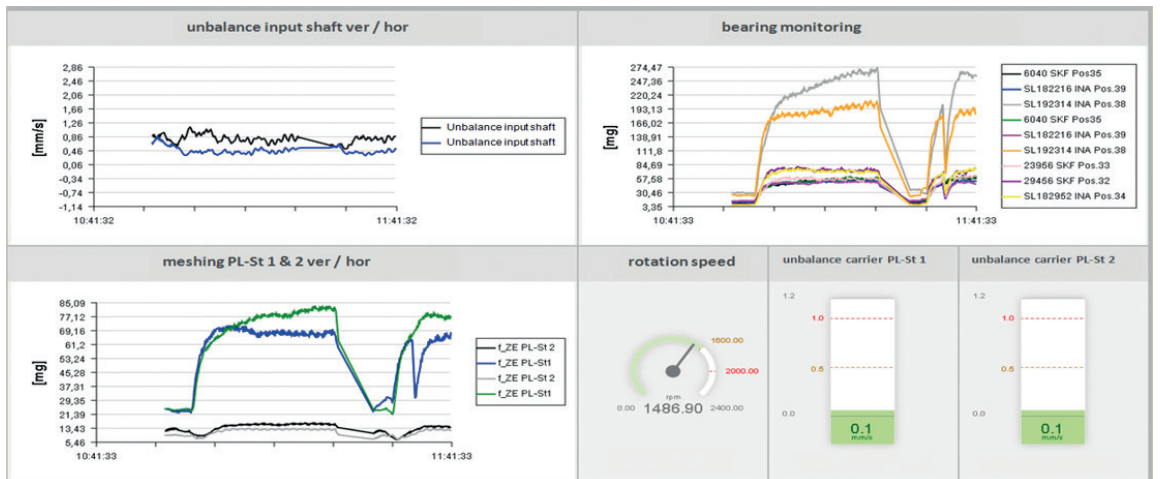
With Control.M DESCH used its extensive know-how in vibration diagnostics to offer a compact and user-friendly tool. With its continuous data monitoring, the system detects defaults at a very early stage to allow for timely organization of needed maintenance.



### Reporting

In regular intervals you receive a report on the present condition and development of the monitored unit.

### Visualization



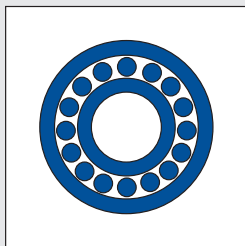
## PREDICTIVE MAINTENANCE

## MACHINE DIAGNOSIS

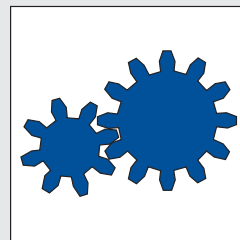
If changes in the monitored data requires speedy evaluation, DESCH offers an on-site inspection as part of our service support.

Together with you, we will determine the repeat intervals and build-up a machine history based on the actual condition measured.

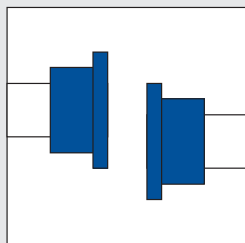
### Detectable defects



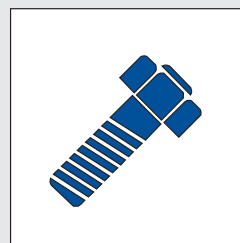
Damaged bearing



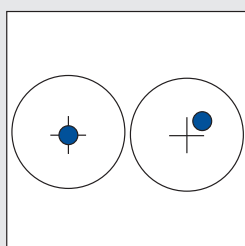
Tooth engagement



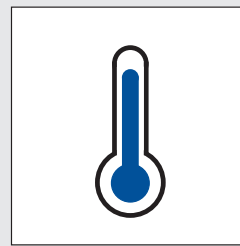
Miss-alignment



Loose connection



Unbalanced



Temperature

## CONTACT

---

DESCH Antriebstechnik GmbH & Co. KG  
Postbox 1440  
59753 Arnsberg/Germany  
Kleinbahnstraße 21  
59759 Arnsberg/Germany  
T +49 2932 300 0  
F +49 2932 300 899  
info@desch.com  
[www.desch.com](http://www.desch.com)



DESCH Canada Ltd.  
240 Shearson Crescent  
Cambridge  
Ontario  
Canada N 1T 1J6  
T +1800 2631866  
+1519 6214560  
F +1519 6231169  
desch.canada@desch.com

DESCH USA Inc.  
3501 Embassy  
Parkway  
Suite 101  
Akron  
Ohio 44333  
T +1 330 937 9030  
F +1 330 937 9031  
sales\_usa@desch.com

DESCH Service Center  
USA LP  
4940 Merrifield Rd  
Dallas  
Texas 75236  
T +1 469 221 2190  
F +1 469 221 2191  
desch.dallas@desch.com

DESCH Italy  
Drive Technology  
Ufficio di rappresentanza  
in Italia  
Via Cavriana, 3  
20134 Milano/Italy  
T +39 02 7391 280  
F +39 02 7391 410  
desch.italia@desch.com

DESCH China  
Machinery (Pinghu) Co., Ltd.  
No. 1680 Xingping 1 Road, Build. 3  
Pinghu Economic Technological  
Development Zone  
314200 Zhejiang P. R. China  
T +86 573 8557 8988  
F +86 573 8557 8989  
desch.china@desch.com

DESCH do Brasil  
Power Transmission S.A.  
Rdv Edgar Máximo  
Zambotto, s/n km 54  
Campo Limpo Paulista, SP  
CEP: 13.231-700  
T +55 11 4039 8240  
F +55 11 4039 8222  
desch.brasilien@desch.com